

DRAWING NO
DA401100

ISS	CHANGES
1.0	ECC 4340 RELEASED 07 OCT 93
1.1	ECC 4522 NOTE ADDED RE POSITION OF C101 & C103 JUL 1 JUN 94
1.2	ECC 4667 C105-C107 DELETED PCB WAS 410487-B C101/103 RESITED JUL 14 OCT 94

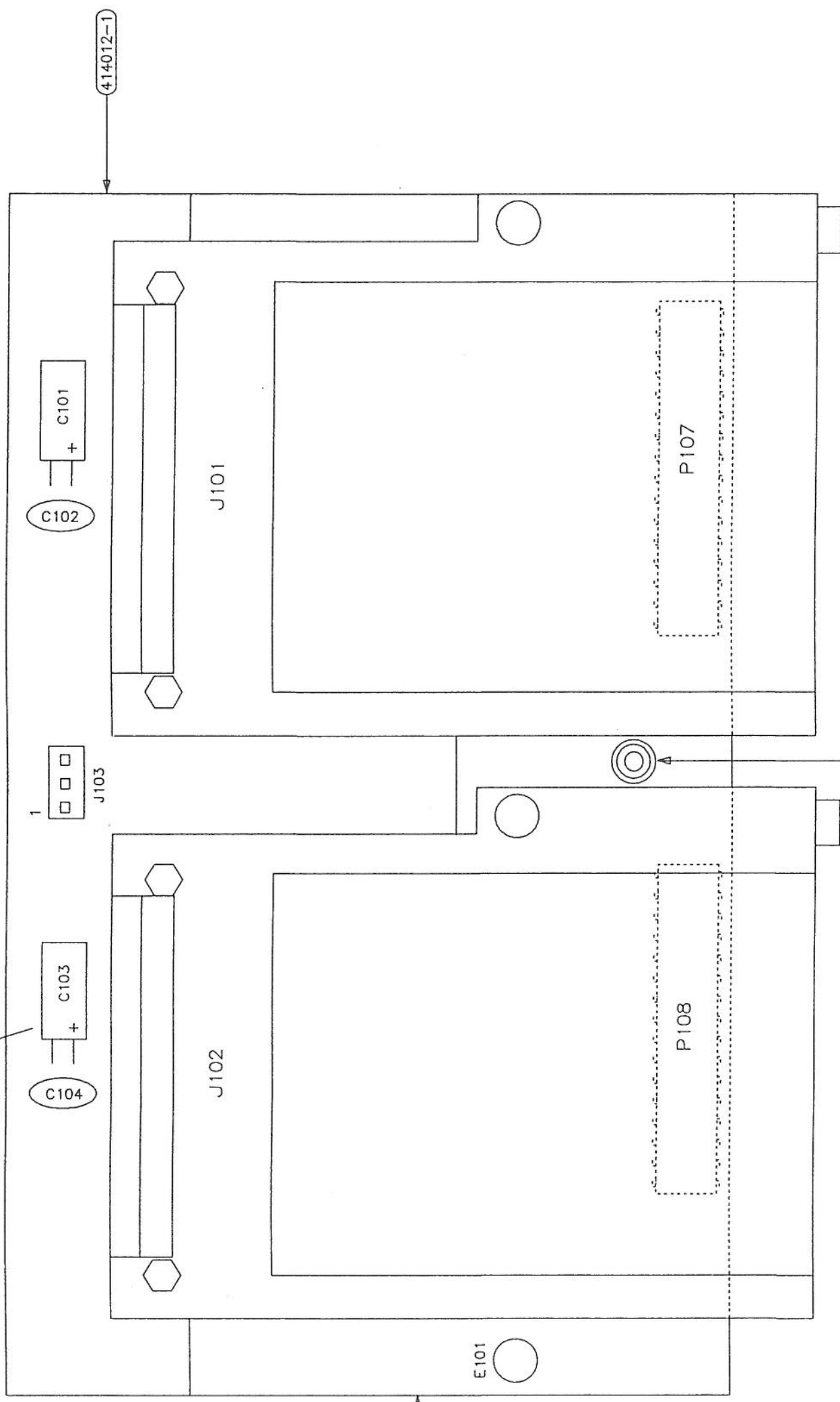
1 8 OCT 1994

WAVETEK
SOPRITCH ENGLAND
© COPYRIGHT 1994
DRAWING NO.
DA401100
SHEET 1 OF 1

TITLE
9100 MEMORY CARD
PCB ASSEMBLY

THIRD ANGLE PROJECTION		DATE		DIMENSIONS IN MILLIMETRES		TOLERANCES		MATERIAL	
		DATE	DATE	SCALE	SCALE	DECIMAL TO 2 PLACES ± 0.1mm	DECIMAL TO 1 PLACE ± 0.2mm	FINISH	FINISH
		25 JUN 93	12 OCT 93	N.T.S.	N.T.S.	WHOLE DIMENSIONS ± 0.4mm	ANGULAR ± 0.5°		
		CHECKED AF	APPROVED RWF			UNLESS OTHERWISE STATED			
						NOT TO BE SCALED			

NOTE : C101 & C103 LAY FLAT
TO MAINTAIN LOW PROFILE

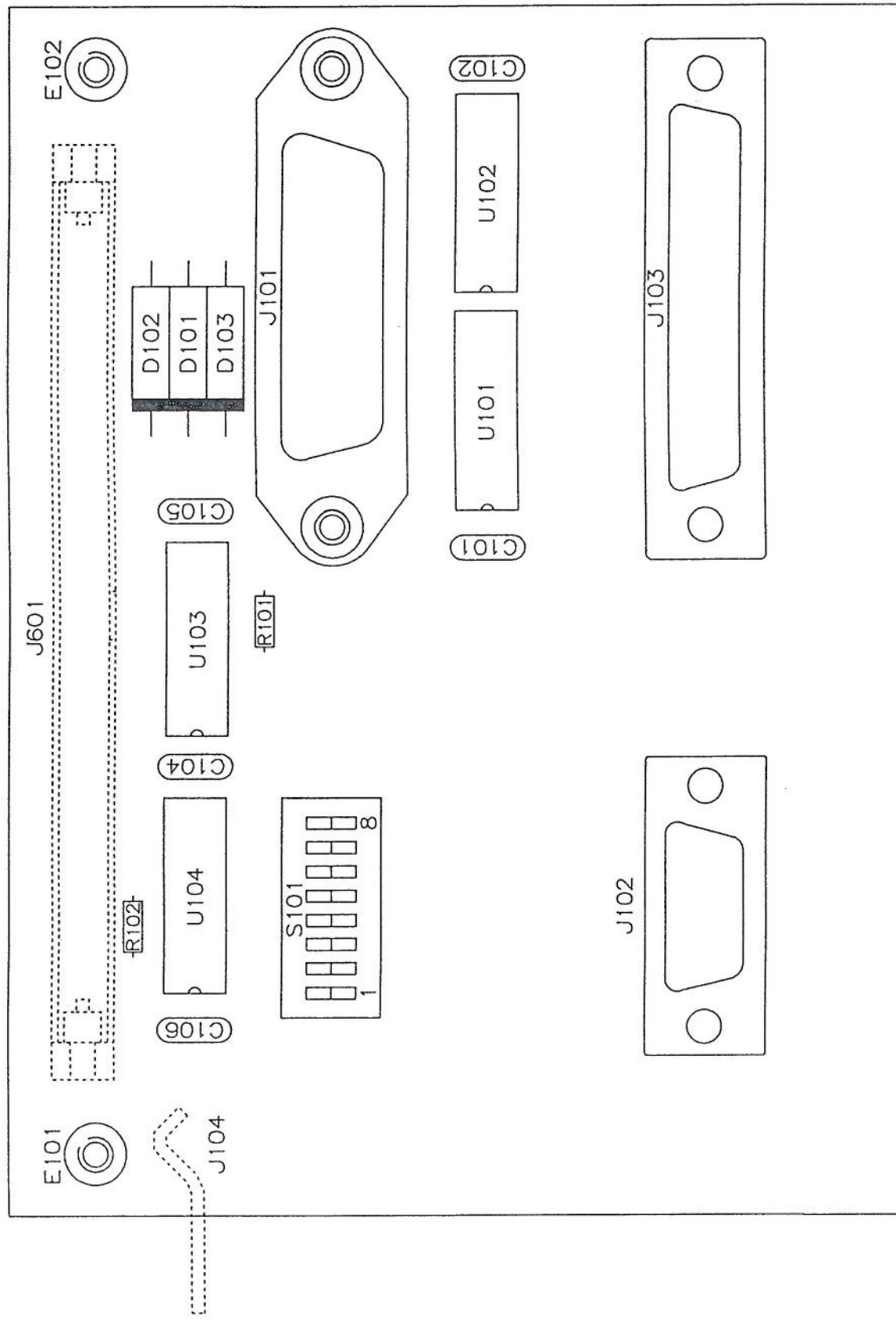


FIT BETWEEN MEMORY CARD
HOLDERS AND PCB

NOTE: P107, P108 AND LOGO
ON OTHER SIDE OF PCB

ISS	CHANGES
1.0	ECO 4340 RELEASED 06 OCT 93
1.1	ECO 4344 PCB WAS ISS B 06 OCT 93

MOUNT J104 & J601 ON REAR OF PCB
MAX COMPONENT HEIGHT 5mm
(EXCEPT CONNECTORS AND STANDOFFS)



THIRD ANGLE PROJECTION		DATE		DIMENSIONS IN MILLIMETRES		TOLERANCES		MATERIAL	
		DATE	DATE	SCALE	SCALE	DECIMAL TO 2 PLACES ± 0.1mm	DECIMAL TO 1 PLACE ± 0.2mm		
		CHECKED	CHECKED	N.T.S.	N.T.S.	WHOLE DIMENSIONS ± 0.4mm	WHOLE DIMENSIONS ± 0.4mm		
		APPROVED	APPROVED			ANGULAR ± 0.5°	ANGULAR ± 0.5°		FINISH
		RWF	RWF			UNLESS OTHERWISE STATED			

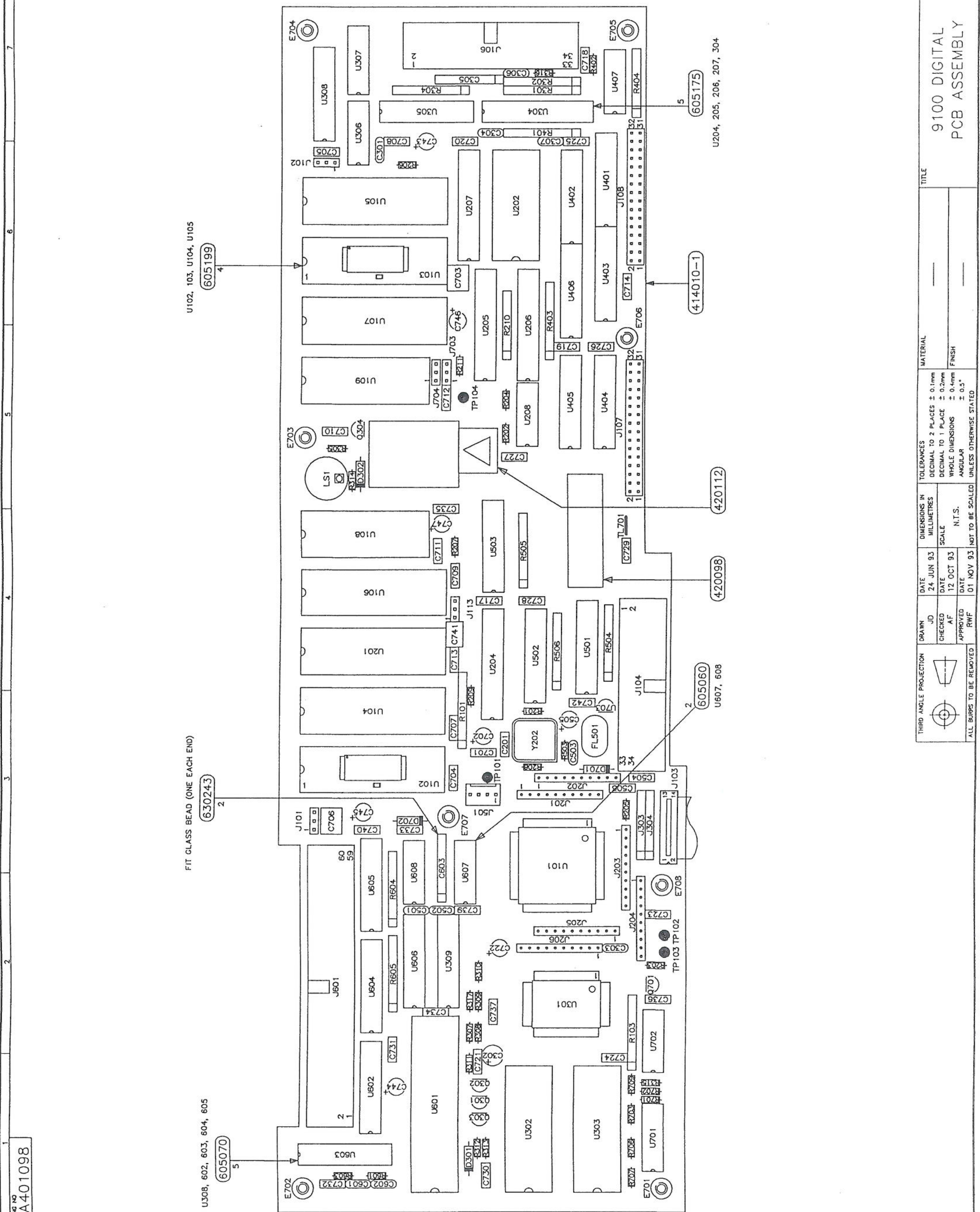
TITLE
9000 INTERCONNECTION
PCB ASSEMBLY

ISS	CHANGES
1.0	ECO 4340 RELEASED 05 OCT 93
1.1	ECO 4343 PCB WAS ISS C 05 OCT 93
1.2	ECO 4419 No off 605199 WAS 2 25 JAN 94 IJL
2.0	ECO 4525 PCB WAS ISS D JD 06 OCT 94
2.1	ECO 4878 U102/U103 MODIFIED PICTOR- IALLY IJL 13 JUL 95

19 JUL 1995

WAVETEK
NORRICH ENGLAND
© COPYRIGHT 1994

DRAWING NO.
DA401098
SHEET 1 OF 1



U102, 103, U104, U105
605199
4

FIT GLASS BEAD (ONE EACH END)
630243
2

U308, 602, 603, 604, 605
605070
5

U204, 205, 206, 207, 304
605175
5

414010-1

420112

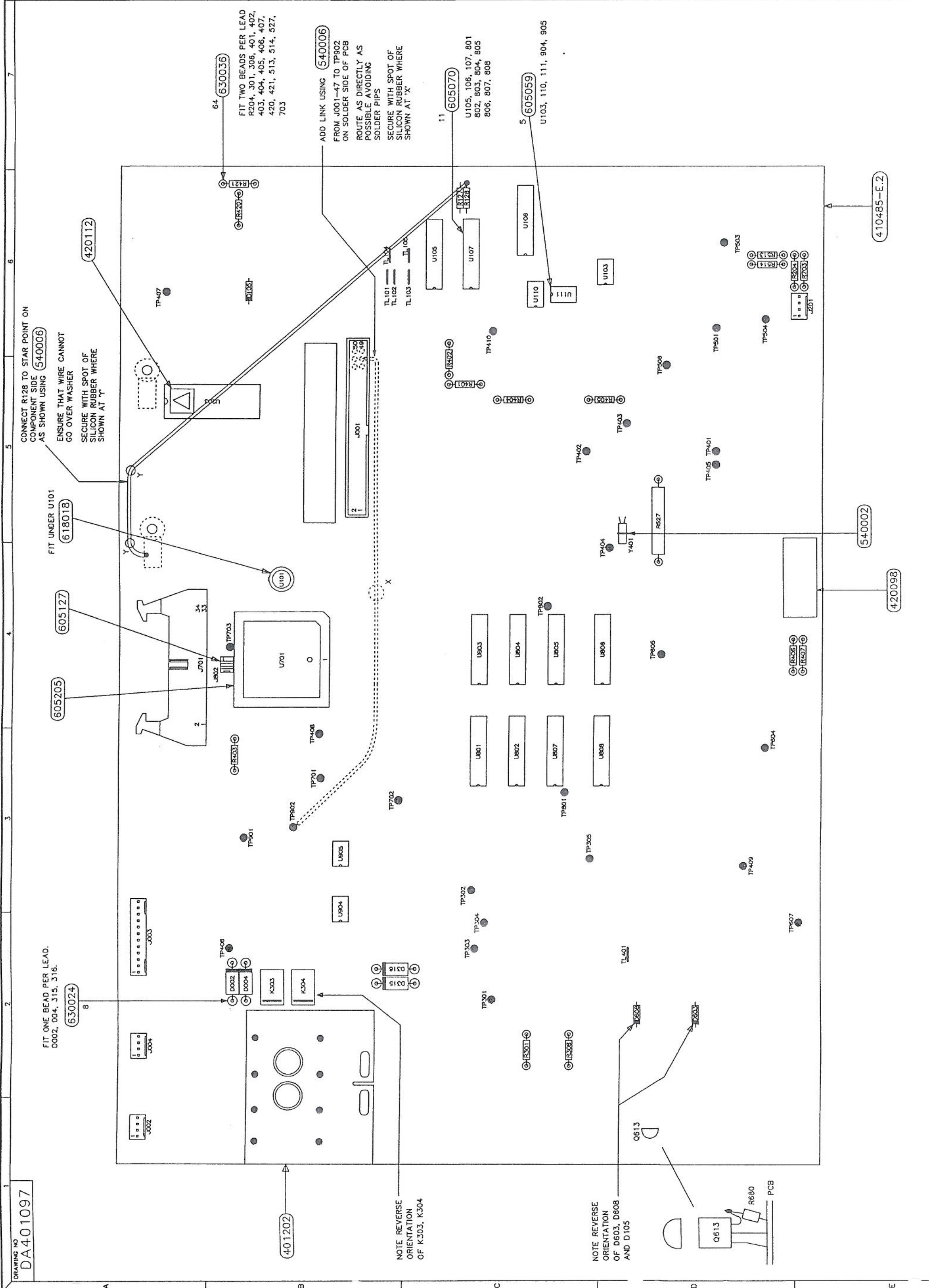
420098

605060
U607, 608
2

THIRD ANGLE PROJECTION		DATE		DIMENSIONS IN MILLIMETRES		TOLERANCES		MATERIAL		
		DRAWN	DATE	DIMENSIONS IN	TOLERANCES	MATERIAL	UNLESS OTHERWISE STATED			
		JD	24 JUN 93	MILLIMETRES	DECIMAL TO 2 PLACES ± 0.1mm					
		CHECKED	DATE	SCALE	DECIMAL TO 1 PLACE ± 0.2mm					
		AF	12 OCT 93	N.T.S.	WHOLE DIMENSIONS ± 0.4mm	FINISH				
		APPROVED	DATE		ANGULAR ± 0.5°					
		RWF	01 NOV 93							
ALL BURRS TO BE REMOVED										
TITLE 9100 DIGITAL PCB ASSEMBLY										

ISS	CHANGES
1.0	ECO 4340 RELEASED 06 OCT 93
1.1	ECO 4342 PCB WAS ISS D 06 OCT 93
1.2	ECO 4405 PCB WAS ISS E.1 21 DEC 93
1.3	ECO 4582 F001-F004, R004, R005, C001 & 900004 DELETED ASSY 401202 ADDED. I/JL 11 AUG 94
1.4	ECO 4828 R680 ADDED I/JL 10 APR 95

19 APR 1995



CONNECT R128 TO STAR POINT ON COMPONENT SIDE AS SHOWN USING (540006)
ENSURE THAT WIRE CANNOT GO OVER WASHER
SECURE WITH SPOT OF SILICON RUBBER WHERE SHOWN AT 'Y'

FIT UNDER U101 (61801B)

FIT ONE BEAD PER LEAD. D002, 004, 315, 316. (630024)

FIT TWO BEADS PER LEAD R204, 301, 306, 401, 402, 403, 404, 405, 406, 407, 420, 421, 513, 514, 527, 703 (630036)

ADD LINK USING (540006) FROM J001-47 TO TP902 ON SOLDER SIDE OF PCB ROUTE AS DIRECTLY AS POSSIBLE AVOIDING SOLDER PIPS
SECURE WITH SPOT OF SILICON RUBBER WHERE SHOWN AT 'X'

NOTE REVERSE ORIENTATION OF K303, K304

NOTE REVERSE ORIENTATION OF D603, D608 AND D105

THIRD ANGLE PROJECTION		DRAWN	DATE	DIMENSIONS IN MILLIMETRES	TOLERANCES	MATERIAL
1	2	JD	29 MAR 93	SCALE	DECIMAL TO 2 PLACES ± 0.1mm DECIMAL TO 1 PLACE ± 0.2mm WHOLE DIMENSIONS ± 0.1mm ANGULAR ± 0.5°	FINISH
3	4	CB	13 OCT 93	N.T.S.		
5	6	RWF	02 NOV 93	NOT TO BE SCALED UNLESS OTHERWISE STATED		

9000 ANALOGUE PCB ASSEMBLY

410485-E.2

540002

420098

410485-E.2

420098

410485-E.2

420098

410485-E.2

420098

410485-E.2

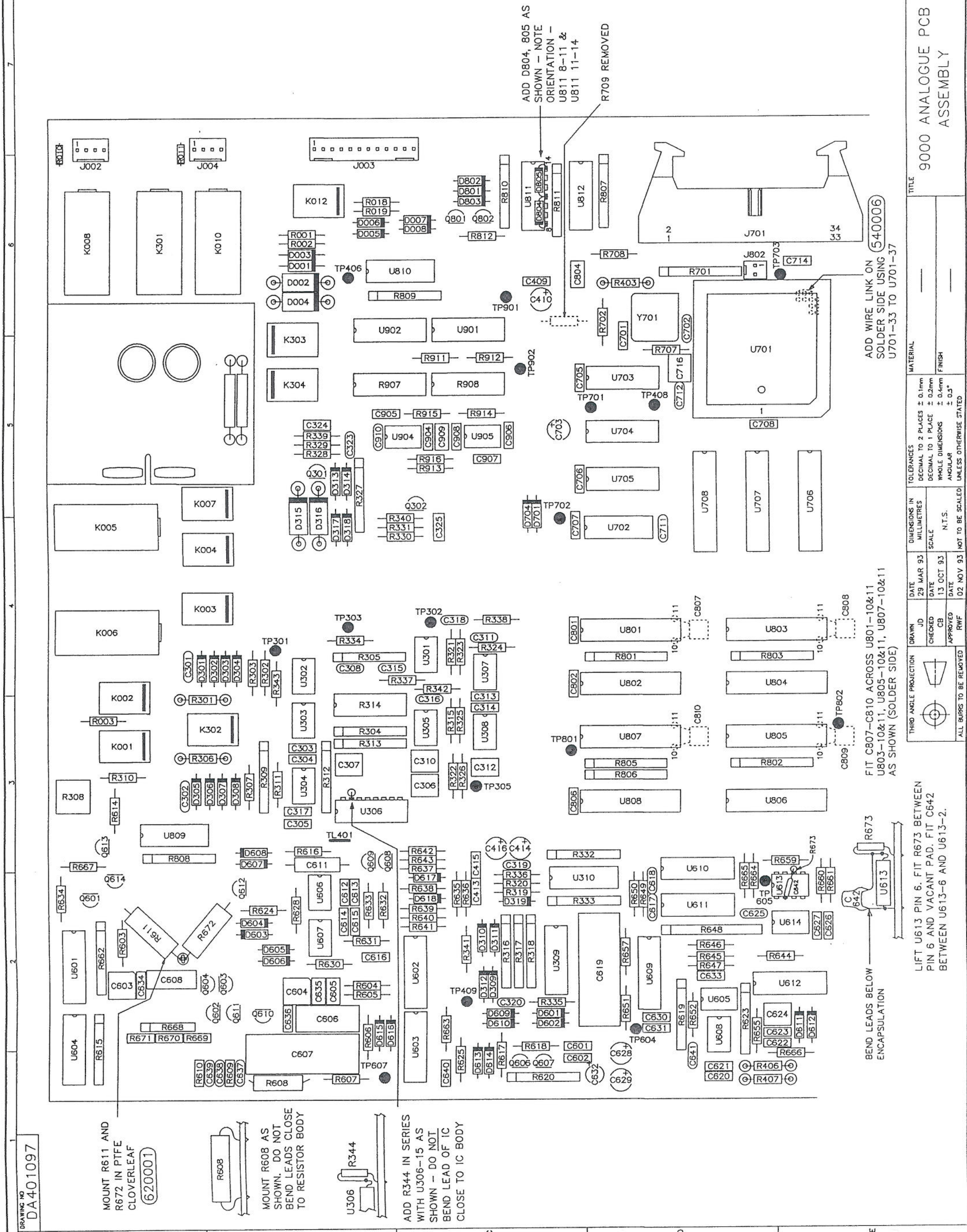
420098

ISS	CHANGES
1.0	ECO 4340 RELEASED 06 OCT 93
1.1	ECO 4342 PCB WAS ISS D 06 OCT 93
1.2	ECO 4405 TRACK CUT NOTES DELETED 21 DEC 93
1.3	ECO 4582 F001-F004, R004, R005 & C001 REPLACED BY PIGGYBACK PCB ASSY. 11 AUG 94 IUL

4661 100 5 -
- 5 OCT 1994

datron
WAVETEK
NORWICH ENGLAND
© COPYRIGHT 1990

DRAWING NO. DA401097
SHEET 2 OF 3



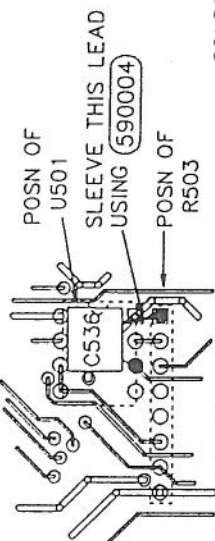
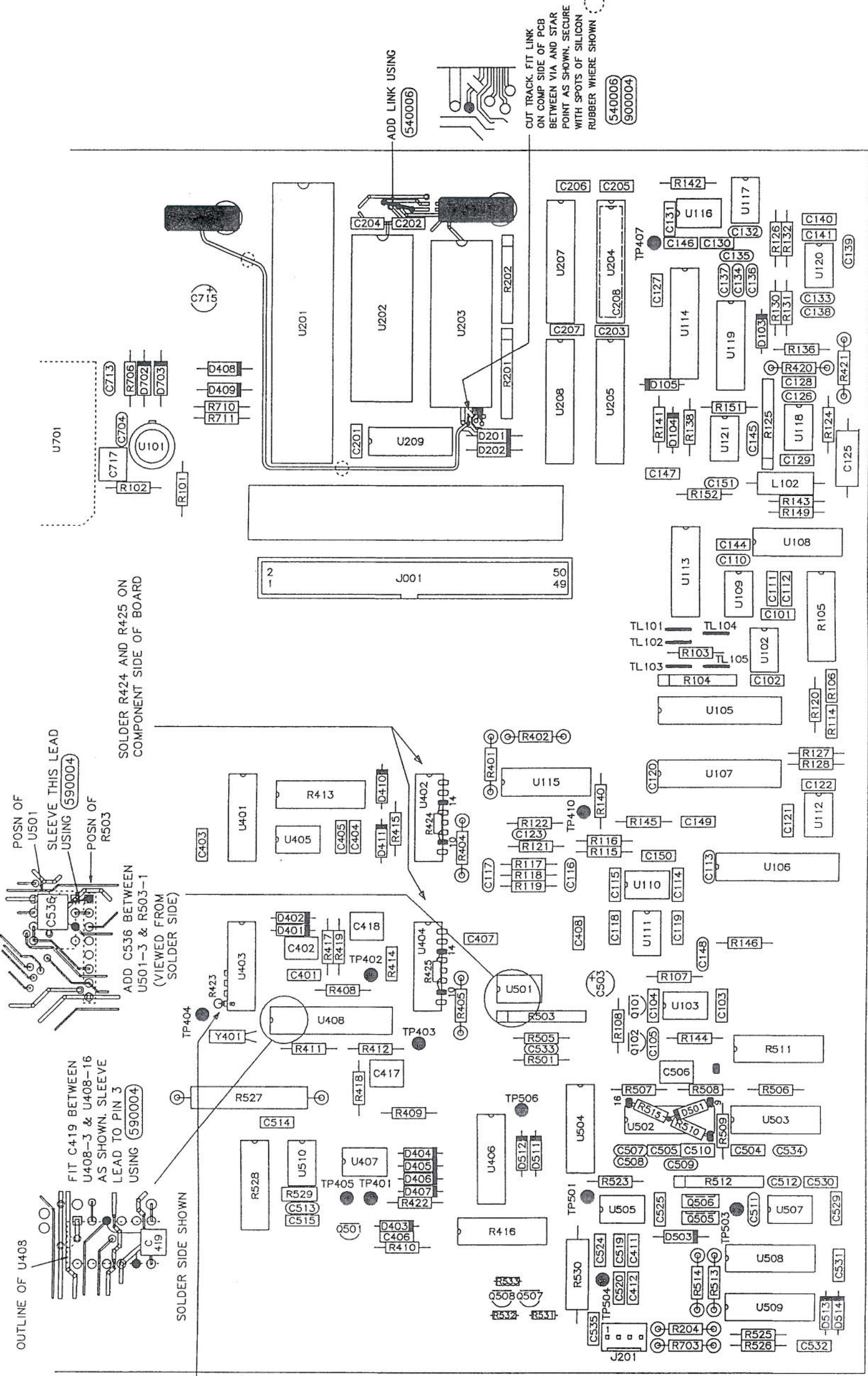
TOLERANCES		DIMENSIONS IN MILLIMETRES		DATE		DRAWN		THIRD ANGLE PROJECTION		MATERIAL		TITLE	
DECIMAL TO 2 PLACES	± 0.1mm	MILLIMETRES	SCALE	29 MAR 93	JD	CONICAL	CONICAL	CONICAL	CONICAL	540006	9000 ANALOGUE PCB ASSEMBLY	9000 ANALOGUE PCB ASSEMBLY	DA401097
DECIMAL TO 1 PLACE	± 0.2mm	SCALE	N.T.S.	13 OCT 93	CB	DECIMAL TO 1 PLACE	DECIMAL TO 1 PLACE	DECIMAL TO 1 PLACE	DECIMAL TO 1 PLACE	FINISH	FINISH	FINISH	FINISH
WHOLE DIMENSIONS	± 0.4mm	SCALE	N.T.S.	02 NOV 93	RWF	WHOLE DIMENSIONS	WHOLE DIMENSIONS	WHOLE DIMENSIONS	WHOLE DIMENSIONS	ANGULAR	ANGULAR	ANGULAR	ANGULAR
ANGULAR	± 0.5°	SCALE	N.T.S.	02 NOV 93	RWF	ANGULAR	ANGULAR	ANGULAR	ANGULAR	ANGULAR	ANGULAR	ANGULAR	ANGULAR
NOT TO BE SCALED UNLESS OTHERWISE STATED													SHEET 2 OF 3

ISS	CHANGES
1.0	ECO 4340 RELEASED 06 OCT 93
1.1	ECO 4342 PCB WAS ISS D 06 OCT 93
1.2	ECO 4349 R423 ADDED 03 NOV 93
1.3	ECO 4405 TRACK CUT NOTES DELETED 21 DEC 93
1.4	ECO 4426 TRACK CUT AND LINK ADDED 21 JAN 94
1.5	ECO 4666 D501, R510 & R515 ADDED 12 OCT 94
1.6	ECO 4828 R424 & R425 ADDED 13 APR 95

19 APR 1995

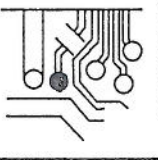
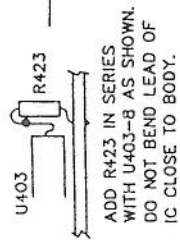
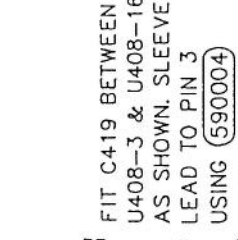
datron
 WAVETEK
 NORWICH ENGLAND
 © COPYRIGHT 1990
 DRAWING NO. DA401097
 SHEET 3 OF 3

TITLE
 9000 ANALOGUE PCB ASSEMBLY

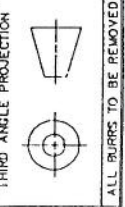
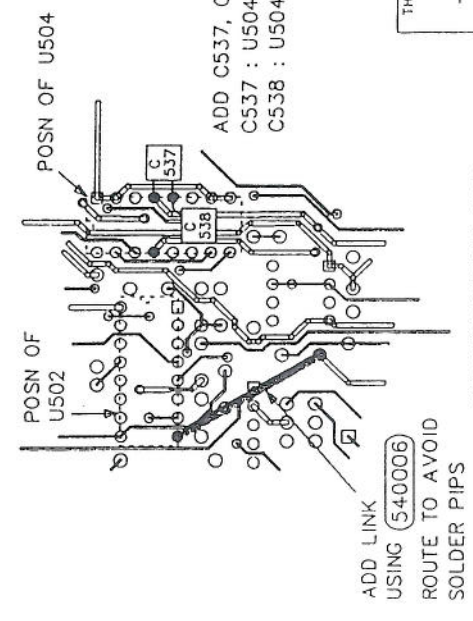
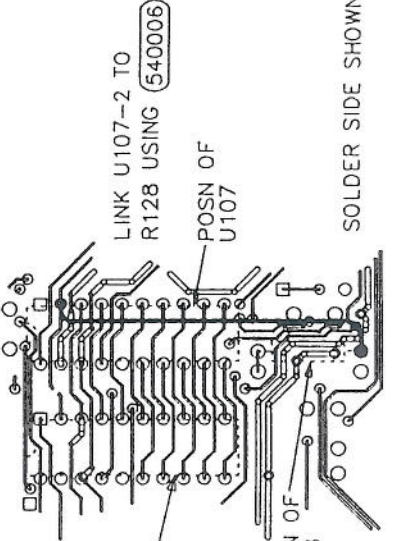


SOLDER R424 AND R425 ON COMPONENT SIDE OF BOARD

ADD C536 BETWEEN U501-3 & R503-1 (VIEWED FROM SOLDER SIDE)



CUT TRACK. FIT LINK ON COMP SIDE OF PCB BETWEEN VIA AND STAR POINT AS SHOWN. SECURE WITH SPOTS OF SILICON RUBBER WHERE SHOWN (5400006) (9000004)



VIEW ON SOLDER SIDE

DRAWN	DATE	DIMENSIONS IN MILLIMETRES	TOLERANCES	MATERIAL
JD	29 MAR 93	SCALE	DECIMAL TO 2 PLACES ± 0.1mm	
CHECKED	13 OCT 93	N.T.S.	DECIMAL TO 1 PLACE ± 0.2mm	
APPROVED	02 NOV 93	NOT TO BE SCALED	WHOLE DIMENSIONS ± 0.4mm	
RWF			ANGULAR ± 0.5°	FINISH
			UNLESS OTHERWISE STATED	

ISS 1.0
 1.1
 1.2
 1.3

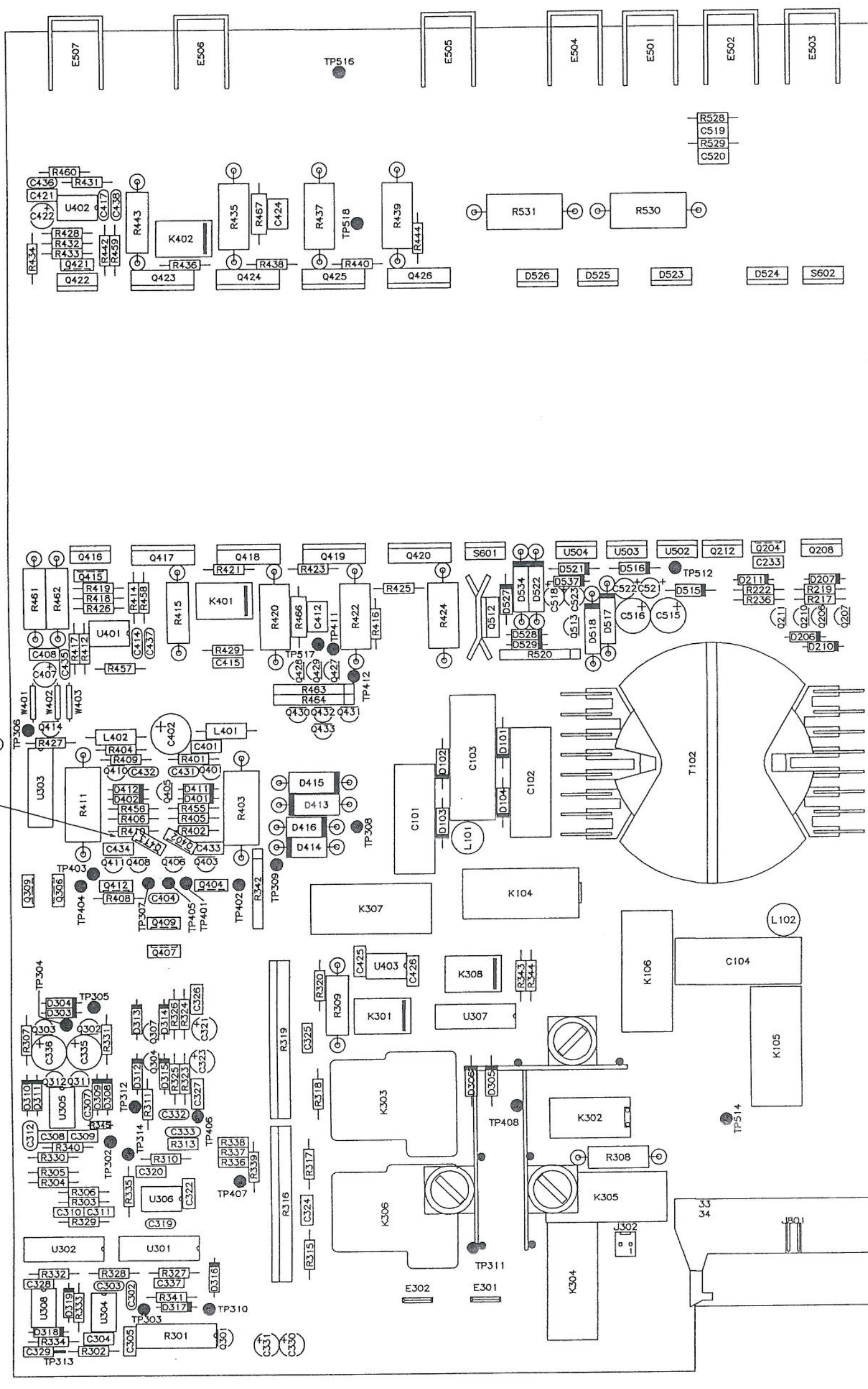
CHANGES
 ECO 4340
 RELEASED
 14 OCT 93
 ECO 4341
 PCB WAS ISS C
 14 OCT 93
 ECO 4365
 PCB WAS ISS D
 05 NOV 93
 ECO 4582
 F301-F303
 REPLACED BY
 PIGGYBACK ASSY
 0402/0413
 REPOSITIONED
 10 AUG 94 J/L

4661 100 G -
 - 5 OCT 1994

dabron
 VVAIVETEK
 NORWICH ENGLAND
 © COPYRIGHT 1990

DRAWING NO.
DA401096

SHEET 2 OF 5



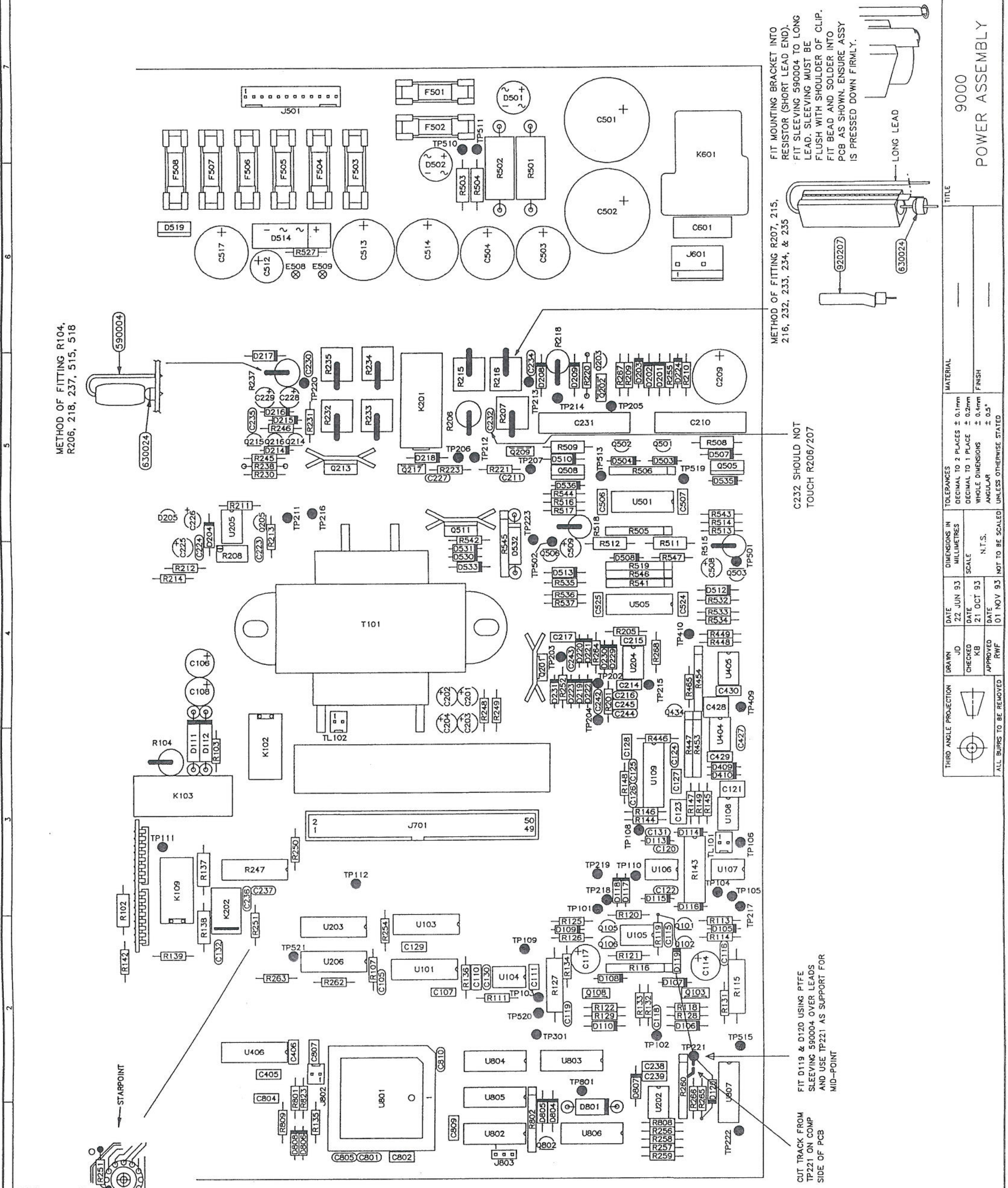
DRAWING NO. DA401096		TITLE 9000 POWER ASSEMBLY	
THIRD ANGLE PROJECTION	DRAWN JD	DATE 22 JUN 93	TOLERANCES DECIMAL TO 2 PLACES ± 0.1mm DECIMAL TO 1 PLACE ± 0.2mm WHOLE DIMENSIONS ± 0.4mm ANGULAR ± 0.5° UNLESS OTHERWISE STATED
ALL BURRS TO BE REMOVED	CHECKED KB	DATE 21 OCT 93	MATERIAL
	APPROVED RWF	DATE 01 NOV 93	FINISH

ISS	CHANGES
1.0	ECO 4340 RELEASED 14 OCT 93
1.1	ECO 4341 PCB WAS ISS C 14 OCT 93
1.2	ECO 4365 PCB WAS ISS D 05 NOV 93
1.3	ECO 4399 D119,D120 ADDED TRACK CUT FROM TP221. 13 DEC 93 IUL
1.4	ECO 4482 U109 DELETED 7 MAR 94 IUL
1.5	ECO 4944 LEG OF R251 LIFTED & RE-SOLDERED TO STARPOINT. IUL 6 OCT 95

00CT1995

datron
WAVETEK
NORWICH ENGLAND
© COPYRIGHT 1990

DRAWING NO. DA401096
SHEET 3 OF 5

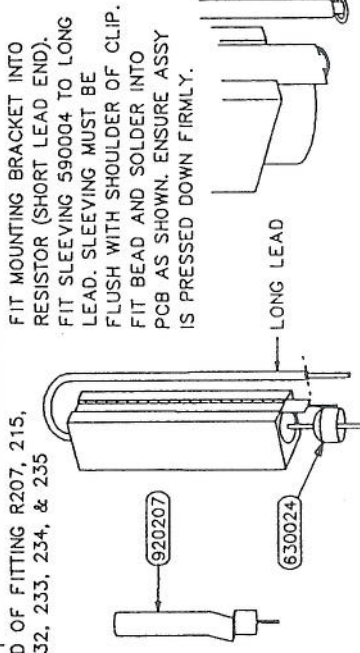


METHOD OF FITTING R104, R206, 218, 237, 515, 518

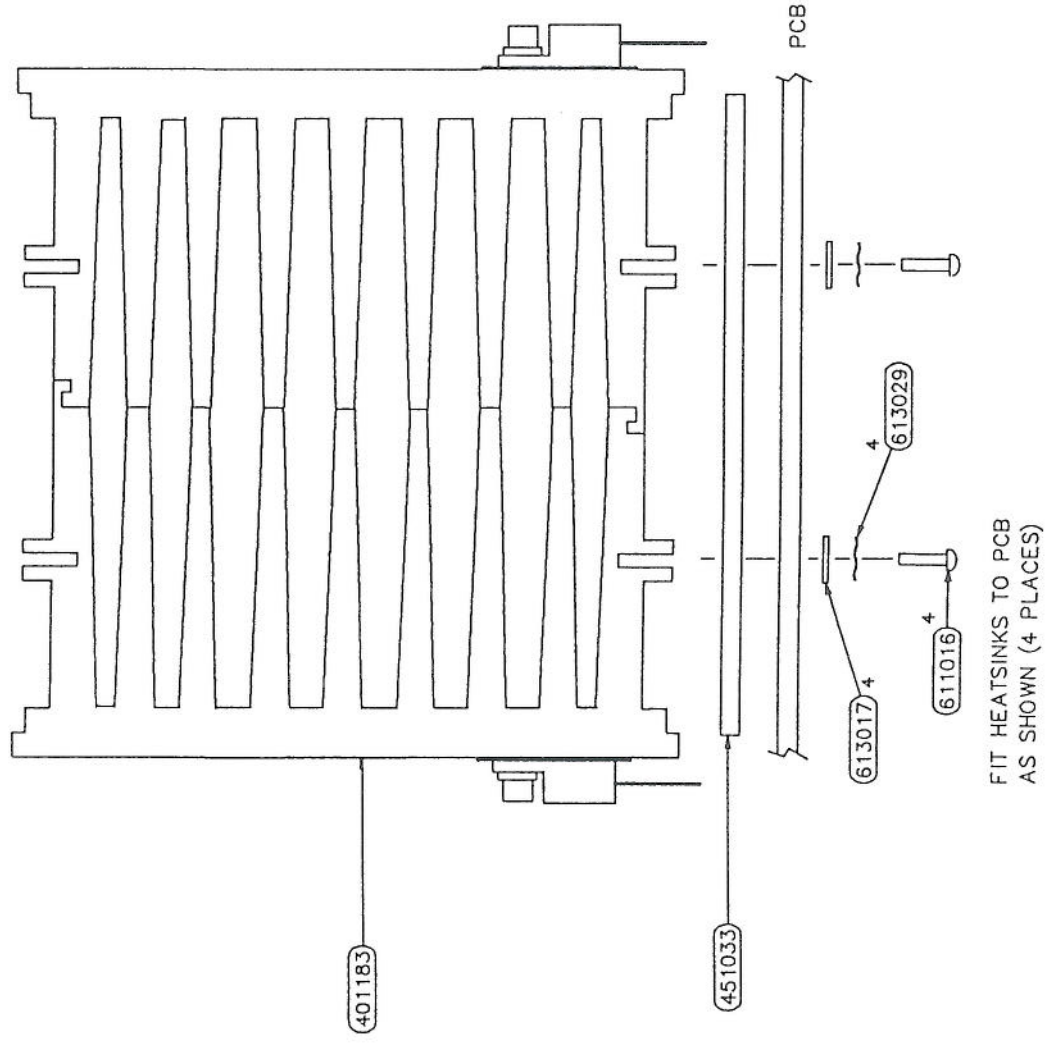
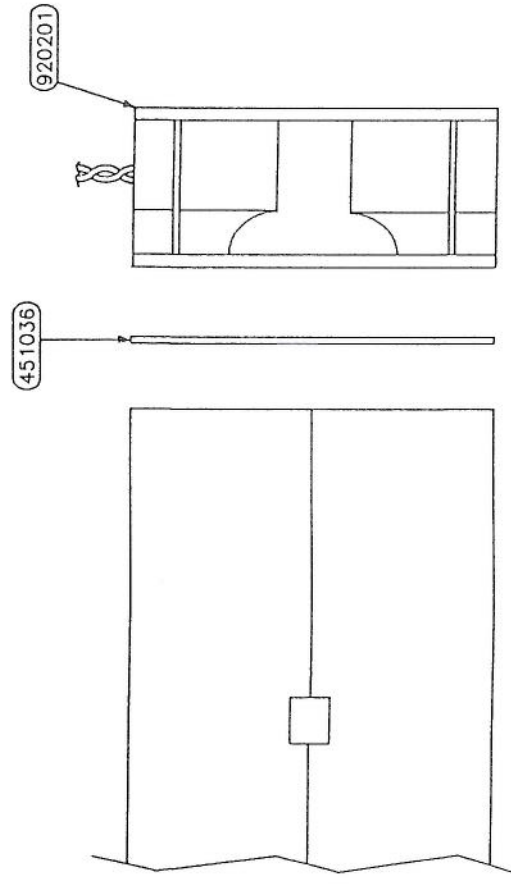
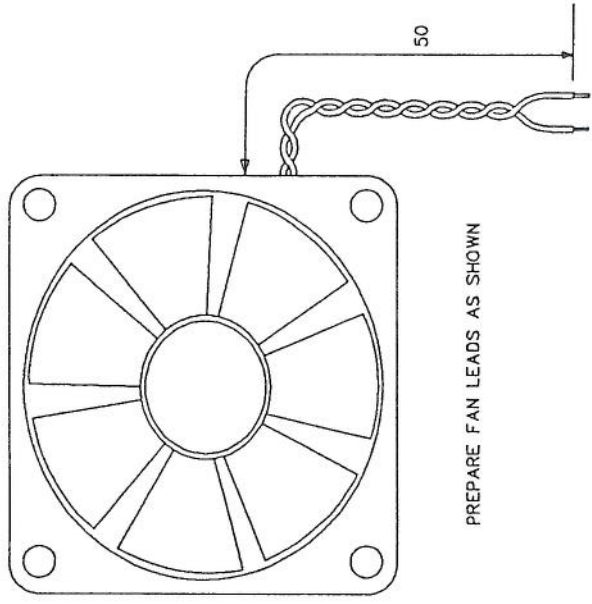
METHOD OF FITTING R207, 215, 216, 232, 233, 234, & 235

C232 SHOULD NOT TOUCH R206/207

CUT TRACK FROM TP221 ON COMP SIDE OF PCB



DRAWING NO.		TITLE		MATERIAL		DIMENSIONS IN MILLIMETRES		TOLEANCES	
DA401096	9000	POWER ASSEMBLY				DECIMAL TO 2 PLACES ± 0.1mm	DECIMAL TO 1 PLACE ± 0.2mm	WHOLE DIMENSIONS ± 0.4mm	ANGULAR ± 0.5°
						SCALE	N.T.S.	NOT TO BE SCALED	UNLESS OTHERWISE STATED
DATE	22 JUN 93	DATE	21 OCT 93	DATE	101 NOV 93	APPROVED	RWF		
DRAWN	JD	CHECKED	KB						
THIRD ANGLE PROJECTION									
ALL BURRS TO BE REMOVED									



ISS	CHANGES
1.0	ECO 4340 RELEASED 14 OCT 93
1.1	ECO 4341 PCB WAS ISS C 14 OCT 93
1.2	ECO 4355 590094 WAS 590032 613017 94 ADDED 03 NOV 93
1.3	ECO 4381 Q212/Q204/Q206 SILPADS WERE TYPE 'A'. 618023 & 900003 ADDED 30 NOV 93 IJL
1.4	ECO 4425 No OFF 613029 WAS 24 No OFF 613005 WAS 4 12 OFF 613007 ADDED 18 JAN 94 IJL
1.5	ECO 4482 RESISTOR ASSY (008043/J109) REMOVED. 7 MAR 94 IJL
1.6	ECO 4446 HEATSINKS 451008 & 451009 DELETED TOGETHER WITH ASSOCIATED COT DEVICES & FIXINGS ASSY 401183 ADDED. 14 APR 94 IJL
1.7	ECO 4718 PICTORIAL CHANGE TO SHOW NEW HEATSINK PROFILE 13 DEC 94

13 DEC 1994

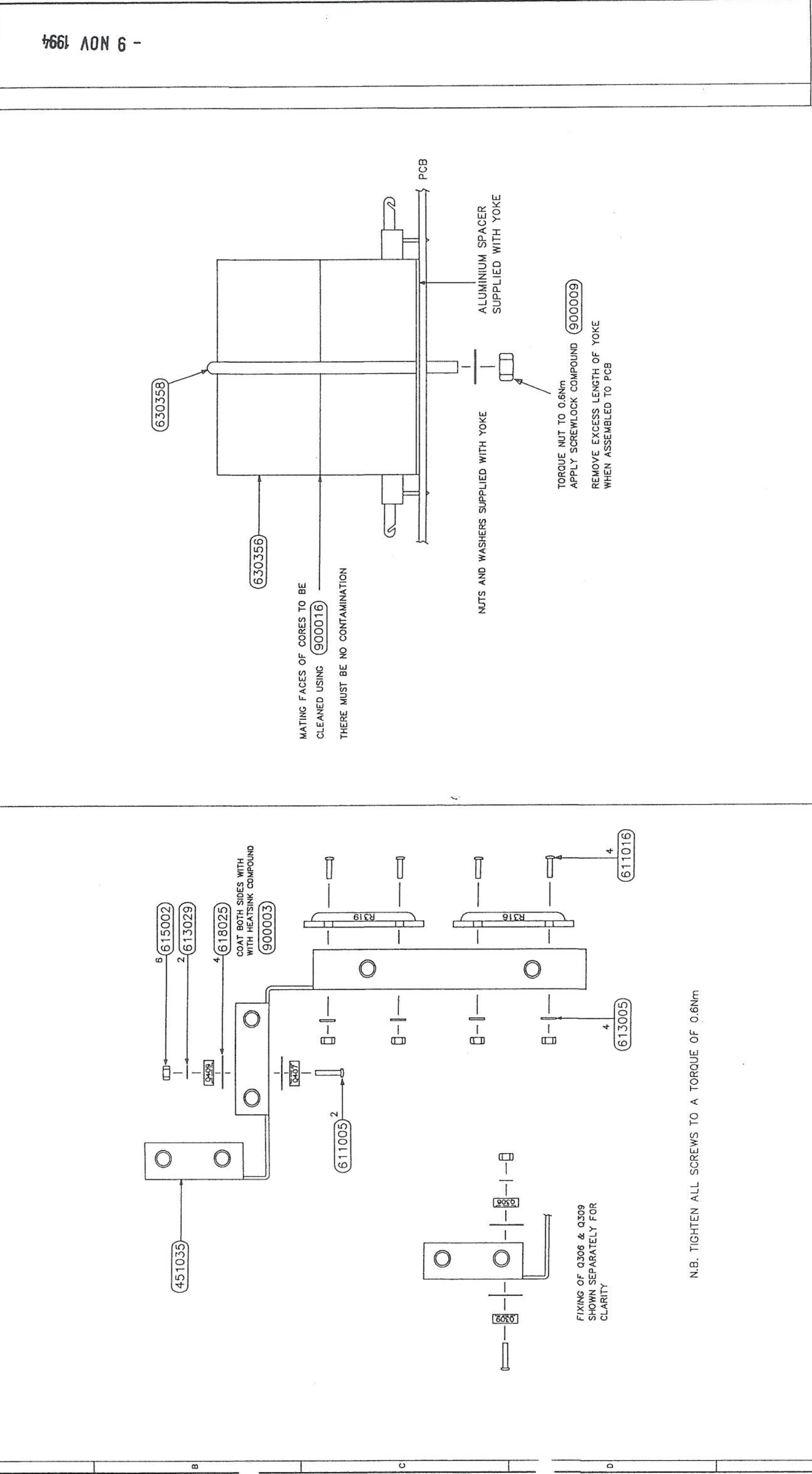
depron
WAVETEK
NORWICH ENGLAND
© COPYRIGHT 1990

THIRD ANGLE PROJECTION		DRAWN		DATE		DIMENSIONS IN MILLIMETRES		TOLERANCES		MATERIAL	
		JD	22 JUN 93	DECIMAL TO 2 PLACES	± 0.1mm	DECIMAL TO 1 PLACE	± 0.2mm	WHOLE DIMENSIONS	± 0.4mm	FINISH	
		KB	21 OCT 93	ANGULAR	± 0.5°						
		RWF	01 NOV 93	NOT TO BE SCALED UNLESS OTHERWISE STATED							

9000
POWER ASSEMBLY

TITLE

ISS	CHANGES
1.0	ECO 4340 RELEASED 14 OCT 93
1.1	ECO 4341 PCB WAS ISS C 14 OCT 93
1.2	ECO 4851 618025 WAS 618021 900003 ADDED JUL 1 NOV 94



9 NOV 1994

 WAVETEK NORWICH ENGLAND © COPYRIGHT 1990		DRAWING NO. DA401096
TITLE 9000 POWER ASSEMBLY		MATERIAL FINISH
DIMENSIONS IN MILLIMETRES SCALE N.T.S. NOT TO BE SCALED	TOLERANCES DECIMAL TO 2 PLACES ± 0.1mm DECIMAL TO 1 PLACE ± 0.2mm WHOLE DIMENSIONS ± 0.4mm ANGULAR ± 0.3° UNLESS OTHERWISE STATED	DATE 22 JUN 93 DATE 21 OCT 93 DATE 01 NOV 93
DRAWN JD CHECKED KB APPROVED RWF	THIRD ANGLE PROJECTION ALL BURS TO BE REMOVED	FINISH

DRAWING NO
DA401096

N.B. TIGHTEN ALL SCREWS TO A TORQUE OF 0.6Nm

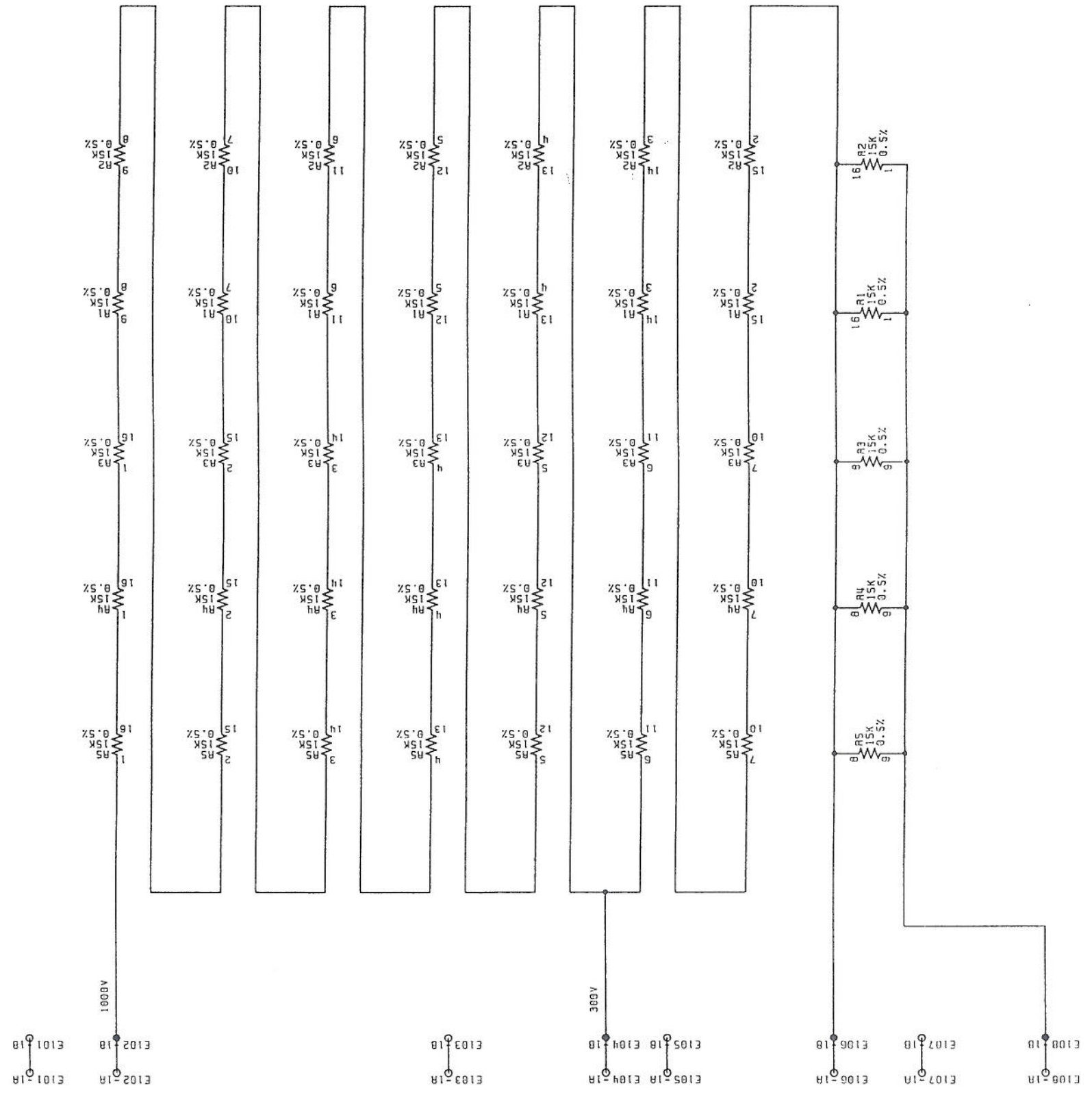
FIXING OF Q306 & Q309
SHOWN SEPARATELY FOR
CLARITY

ISS	CHANGES
1.0	ECD 4340 RELEASED 07 OCT 93

0 5 NOV 1993

depron
WAVETEK
NORWICH, ENGLAND
© COPYRIGHT 1992
DRAWING_NO

DATE 21 OCT 93
DRAWN JR
TITLE 300V / 1KV ATTENUATOR PCB
9000
PCB
DC401151
SHEET 1 OF 1

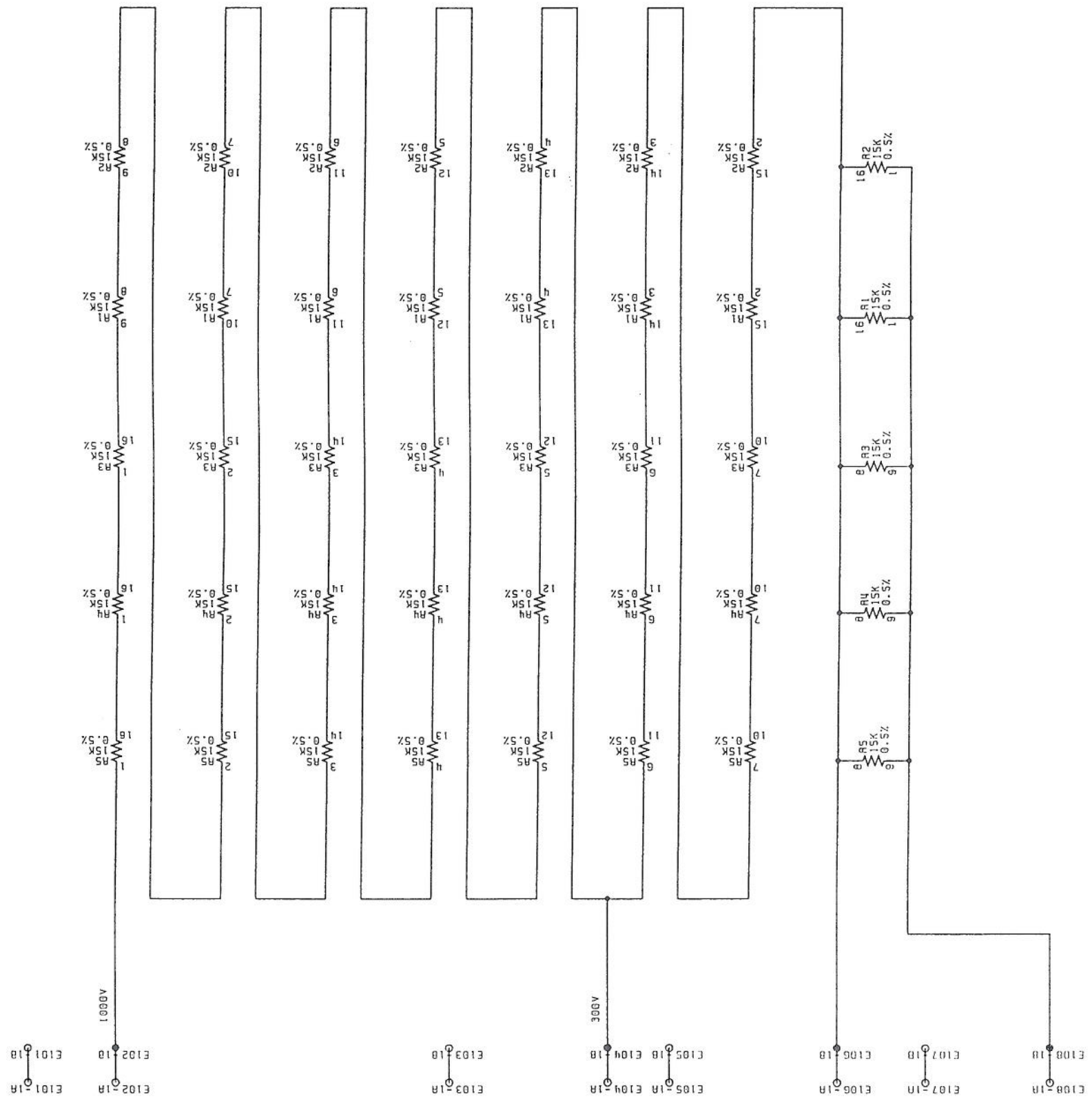


0 5 NOV 1993

depron
WAVETEK
NORWICH ENGLAND
© COPYRIGHT 1992

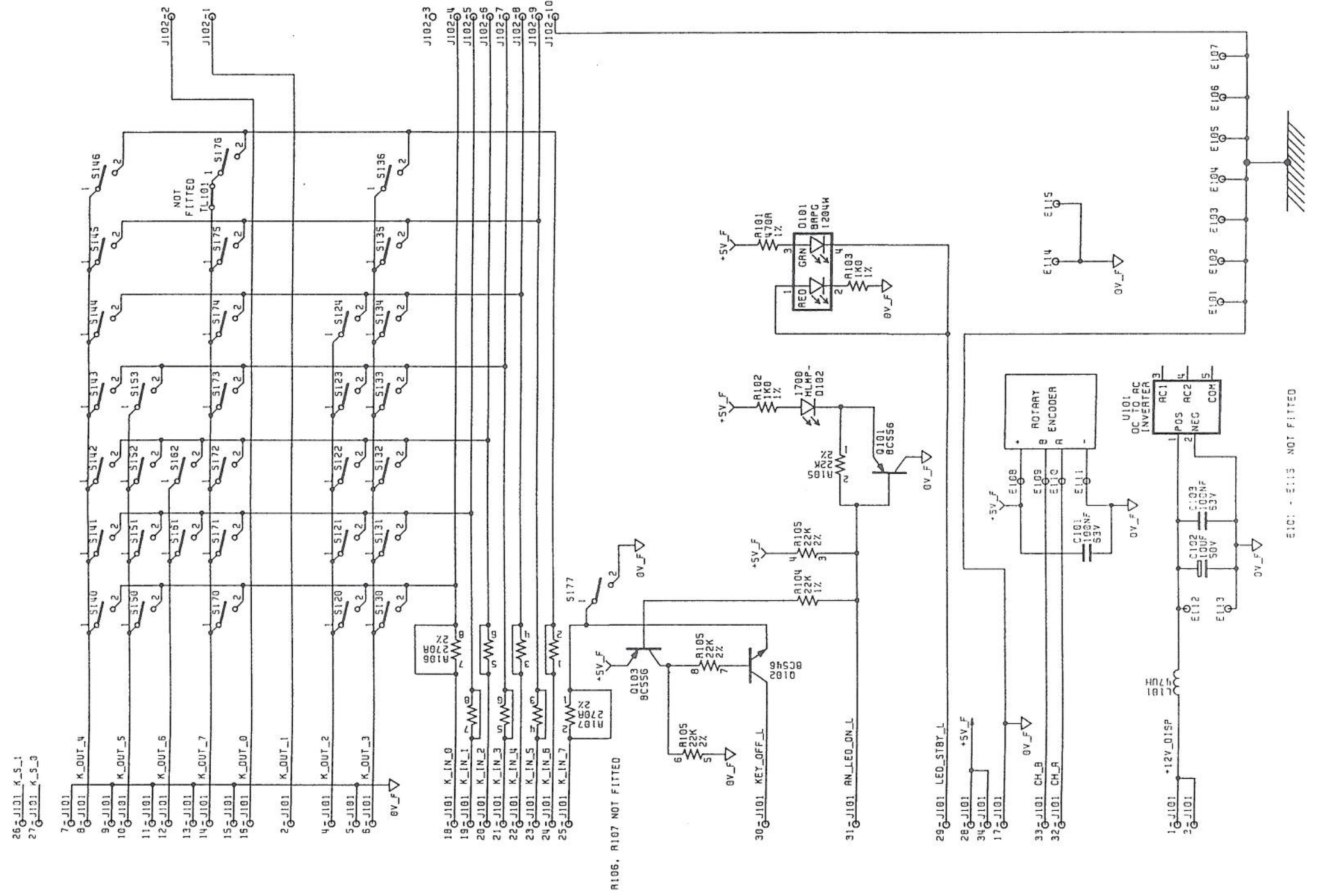
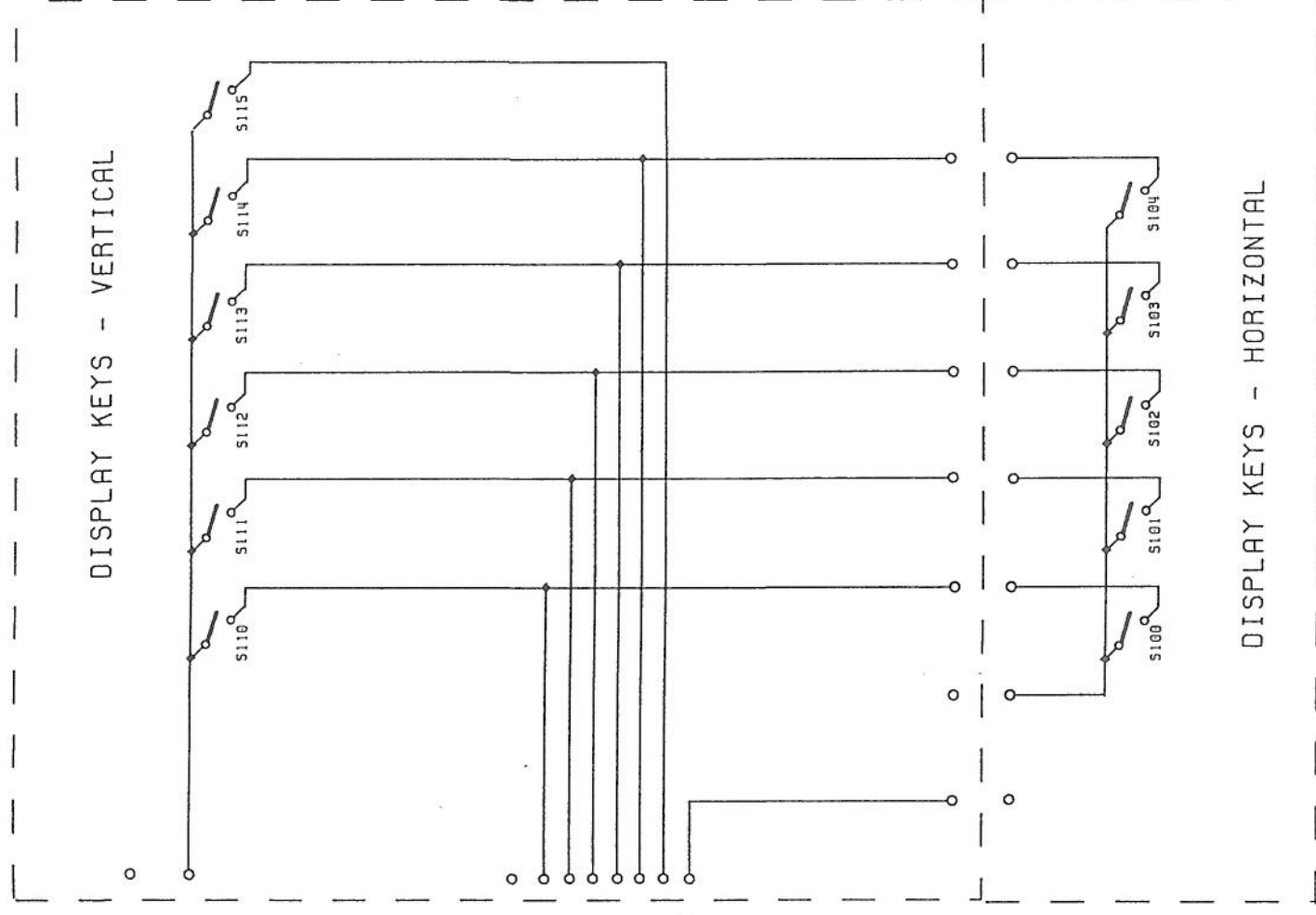
DRAWING_NO
DC401151
SHEET 1 OF 1

DRAMAN JR DATE 4 MAY 93
CYSB DATE 21 Oct 83
PRT DATE 11-11-83
TITLE
9000
300V / 1KV ATTENUATOR
PCB



ISS	CHANGES
1.0	ECO 4348 RELEASED 07 OCT 93
1.1	ECO 4429 NOT FITTED PINS E114, E115 ADDED 14 FEB 94
1.2	ECO 4982 SURPLUS PIN ON VERT DISPLAY KEY DELETED 1 JUL 31 OCT 95

7 NOV 1995

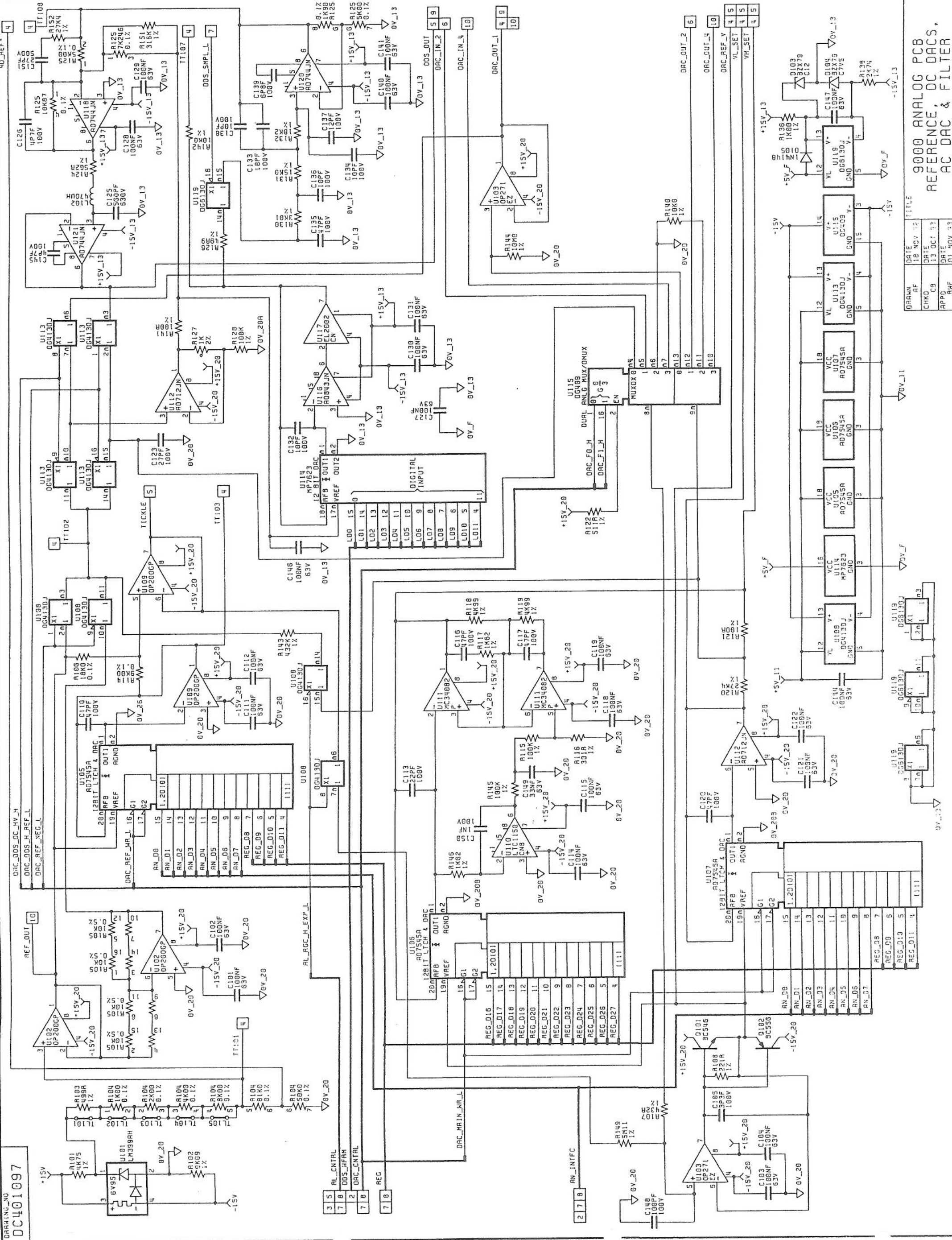


E101 - E115 NOT FITTED

CHANGES

1.0	ECO 4340	REL 6360	06 OCT 93
1.1	ECO 4342	PCB HAS 155 D	06 OCT 93
1.2	ECO 4393	243K	11 DEC 93
1.3	ECO 4426	0V_26 HAS 0V_10	20 JAN 94
1.4	ECO 4456	C145 HAS 2P2F	16 FEB 94

13 FEB 1994



9000 ANALOG PCB REFERENCE, DC DACS, AC DAC & FILTER

DRWN	DATE	BY	REV
CB	13 OCT 93	CB	1
APPD	01 NOV 93	APPD	1

DC401097

SHEET 1	OF 10
---------	-------

WAVETEK
NORRICH, ENGLAND
© COPYRIGHT 1992
DRAWING NO